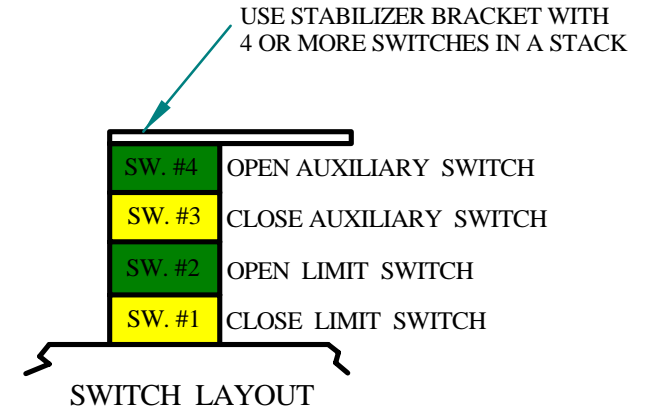
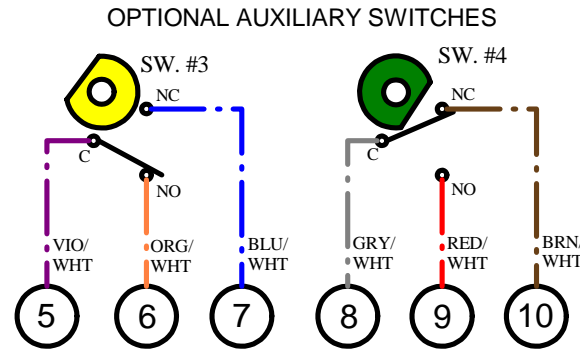
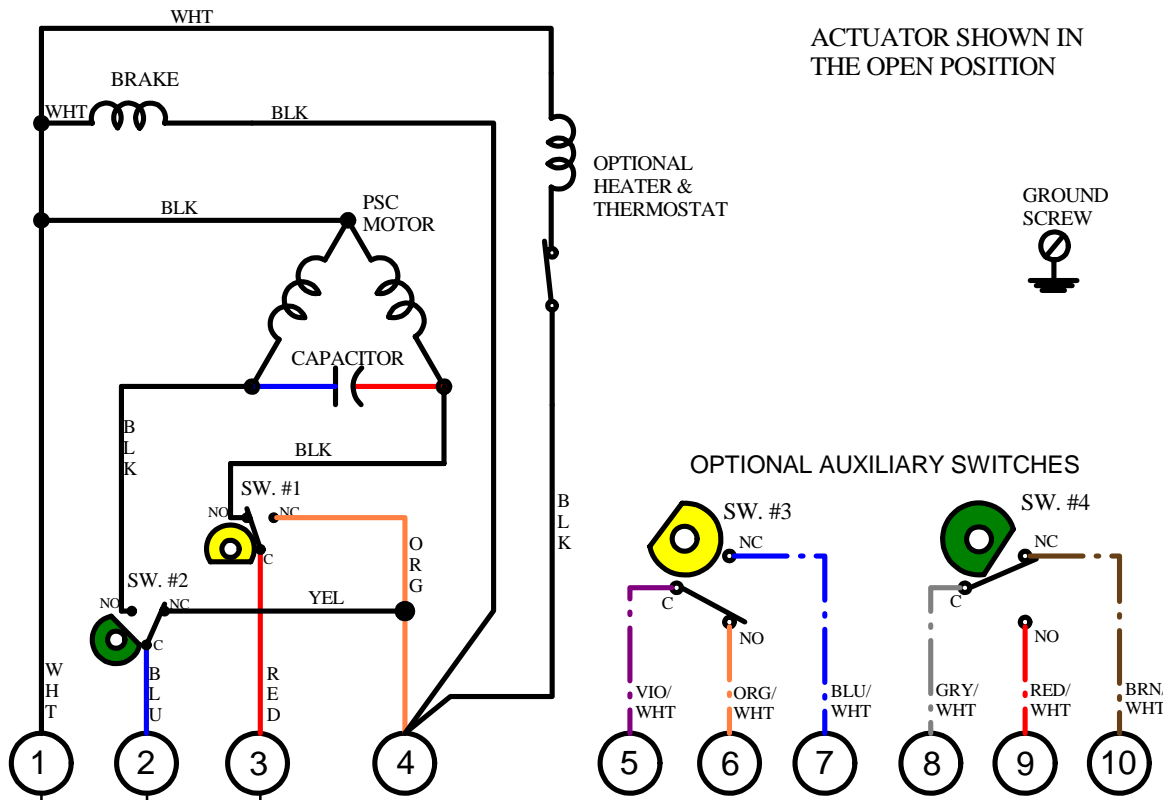


REV.	DESCRIPTION	DATE	BY
1	NEW WIRE COLOR CHANGE; AUX SW. WIRE	04APR16	WJR
2	CHANGED WIRING AND CAM FOR SW. #1	23JUN16	WJR

ACTUATOR SHOWN IN THE OPEN POSITION



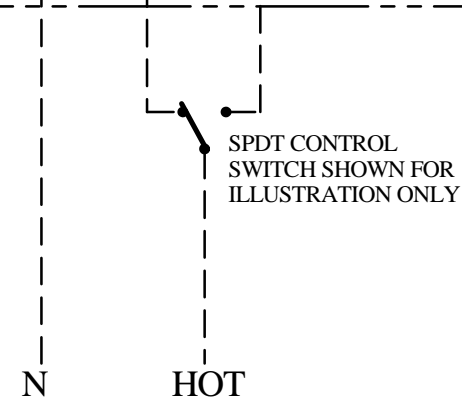
**NOTES:**

POWER TO TERMINALS ONE & TWO OPENS THE VALVE (CCW ROTATION)  
 POWER TO TERMINALS ONE & THREE CLOSSES THE VALVE (CW ROTATION)  
 TERMINAL 4 SUPPLIES 120V POWER TO THE BRAKE ONCE THE ACTUATOR REACHES IT'S OPEN OR CLOSE POSITION. THE BRAKE WILL HOLD THE ACTUATOR IN THAT POSITION UNTIL POWER IS DELIVERED TO THE OPPOSITE DIRECTION.

LOSS OF SUPPLY POWER WILL SHUT OFF POWER TO THE BRAKE AND CAUSE THE ACTUATOR TO BE SPRING DRIVEN TO THE FAIL POSITION. UPON RETURN OF SUPPLY POWER THE ACTUATOR WILL AUTOMATICLY RETURN TO THE POSITION THE CONTROL SWITCH DESIGNATES.

DO NOT MOTOR DRIVE THE ACTUATOR INTO MECHANICAL STOP. OUTPUT PINION WILL BE DAMAGED.

**THIS IS A FAIL-SAFE ACTUATOR - DO NOT USE IN CONTROL TYPE APPLICATIONS**



**FIELD WIRING**

A.C. SUPPLY POWER

**IC<sub>I</sub>** Indelac Controls, Inc.  
 Florence, Ky. 41042

WIRING DIAGRAM, AS SPRING RETURN ELECTRIC ACTUATOR WITH OPTIONAL HEATER, THERMOSTAT, BRAKE, & 2 AUXILIARY SWITCHES

JLR 9-10-99

**W990910**