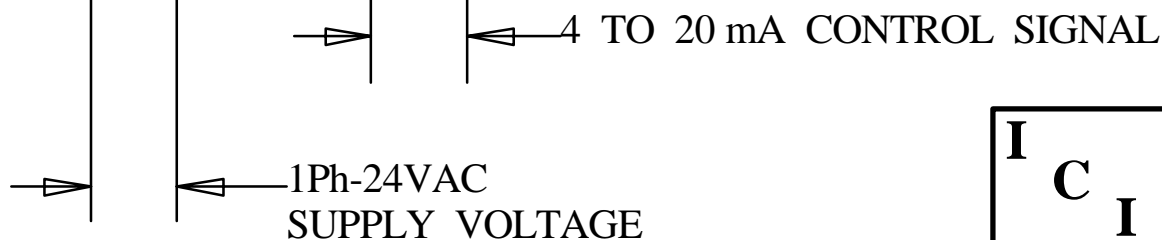


NOTE:  
ACTUATOR SHIPPED IN OPEN POSITION, 20mA REPRESENTS OPEN POSITION. DO NOT ADJUST FEEDBACK POTENTIOMETER OR LIMIT SWITCHES THEY ARE FACTORY SET AND DO NOT REQUIRE CALIBRATION.

TO CALIBRATE THE OPEN AND CLOSE POSITION USE THE ZERO (4mA) AND SPAN (20mA) TRIM POTENTIOMETERS.

TO CALIBRATE OPERATE ACTUATOR TO CLOSE POSITION AND ADJUST ACTUATOR POSITION WITH ZERO TRIM POT. THEN OPERATE TO OPEN POSITION AND ADJUST ACTUATOR POSITION USING SPAN TRIM POT. NO FURTHER CALIBRATION IS NECESSARY.

## FIELD WIRING



WIRING DIAGRAM FOR K SERIES WITH 4-20 mA CONTROL, 24V<sub>ac</sub> SUPPLY POWER (24V<sub>dc</sub> MOTOR) RECTIFIED TO OPERATE DC MOTOR.

**I C I** Indelac Controls, Inc.  
Hebron, Ky. 41048

12-22-97 JLR

A 971222