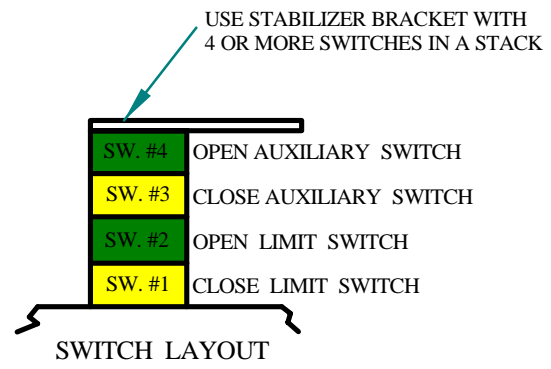
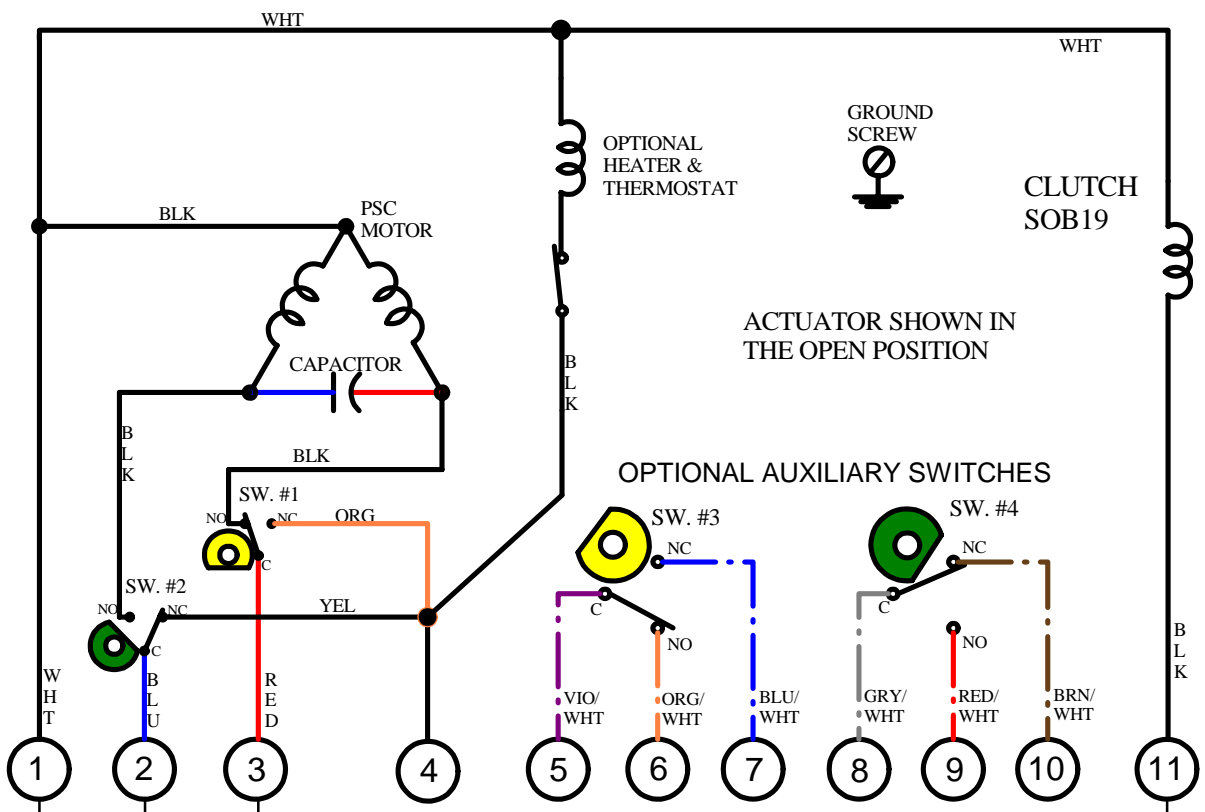


REV.	DESCRIPTION	DATE	BY
1	REMOVE BRAKE OPTION	19 JUN 23	DJB

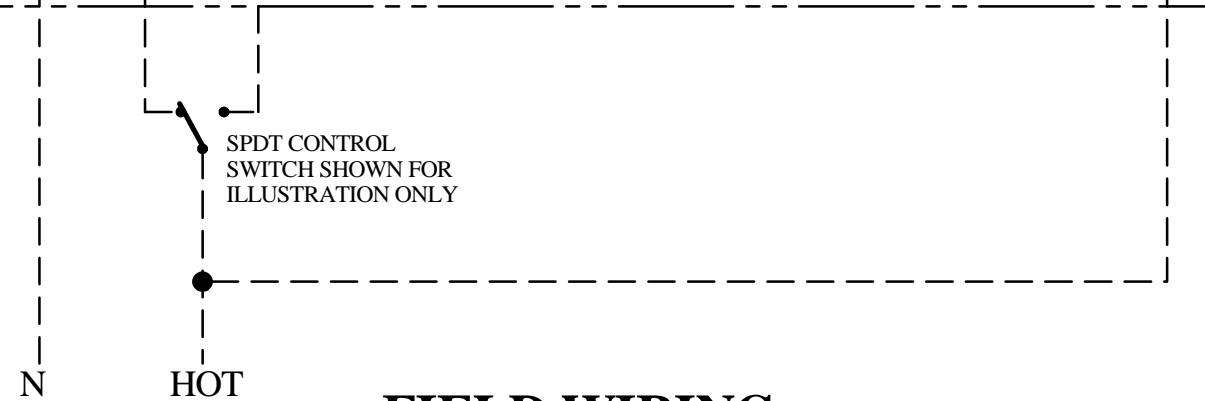


NOTES:
 POWER TO TERMINALS 1 & 2 OPENS THE VALVE (CCW ROTATION)
 POWER TO TERMINALS 1 & 3 CLOSES THE VALVE (CW ROTATION)

LOSS OF SUPPLY WILL SHUT OFF POWER TO THE CLUTCH AND CAUSE THE ACTUATOR TO BE SPRING DRIVEN TO THE FAIL POSITION. UPON RETURN OF SUPPLY POWER THE ACTUATOR WILL AUTOMATICLY RETURN TO THE POSITION THE CONTROL SWITCH DESIGNATES.

DO NOT MOTOR DRIVE ACTUATOR INTO MECHANICAL STOP, OUTPUT PINION WILL BE DAMAGED.

THIS IS A FAIL-SAFE ACTUATOR DO NOT USE IN CONTROL TYPE APPLICATIONS



FIELD WIRING

A.C.
SUPPLY
POWER

IC_I Indelac Controls, Inc.
 Florence, Ky. 41042

WIRING DIAGRAM, 115VAC ASC SPRING
 RETURN ACTUATOR WITH CLUTCH.
 OPTIONAL 2 AUXILIARY SWITCHES &
 HEATER/THERMOSTAT

WJR 14JUL16
W160714