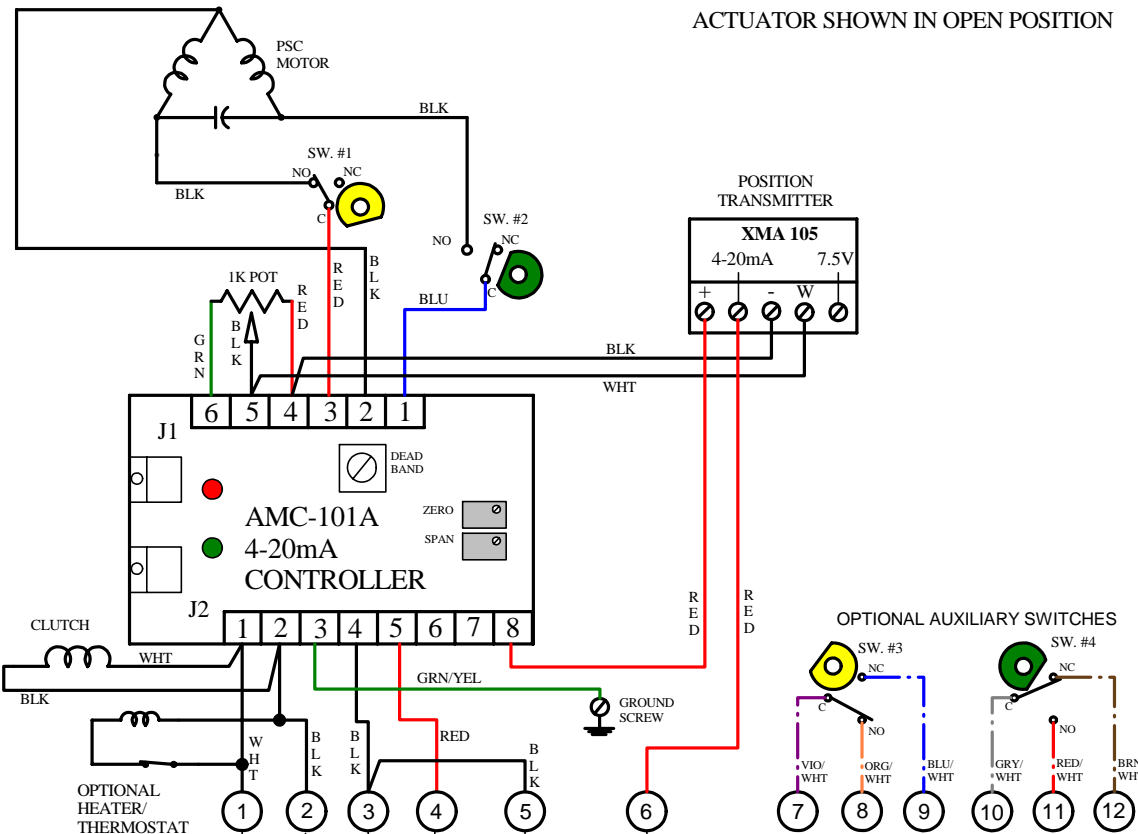
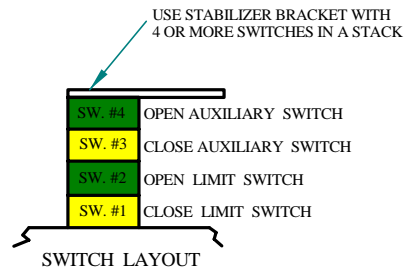


ACTUATOR SHOWN IN OPEN POSITION



REV	DESCRIPTION	DATE	INITIALS
2	REMOVE OPTIONAL, BRAKE	06/JUN /23	DJB



NOTE:
 THE FEEDBACK POTENTIOMETER AND LIMIT SWITCHES
 HAVE BEEN SET AT THE FACTORY - THEY DO NOT REQUIRE
 FURTHER CALIBRATION.

TO CALIBRATE THE OPEN AND CLOSE POSITION USE THE
 TRIM POTS LABELED Z (ZERO) FOR CLOSE (4mA) AND S
 (SPAN) FOR OPEN (20mA).

115VAC POWER TO BE APPLIED ALL THE TIME - THIS
 POWERS AND ENGAGES THE MOTOR CLUTCH. WHEN
 POWER IS REMOVED, THE CLUTCH DIS-ENGAGES AND THE
 ACTUATOR WILL FAIL TO THE DESIRED POSITION.

ACTUATOR SHIPPED IN ITS NORMAL FAIL POSITION.

120 VAC POWER
 SUPPLY

N

HOT

4-20mA CONTROL
 CURRENT

FIELD WIRING

IC I Indelac Controls, Inc.
 Florence, Ky. 41042

WIRING DIAGRAM, SPRING RETURN ASC 115VAC WITH
 CLUTCH, 4-20mA POSITIONER & TRANSMITTER,
 OPTIONAL 2 AUX. SWITCHES, HEATER.

W160624

WJR

24JUN16