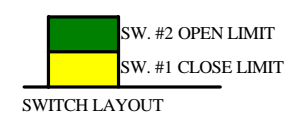
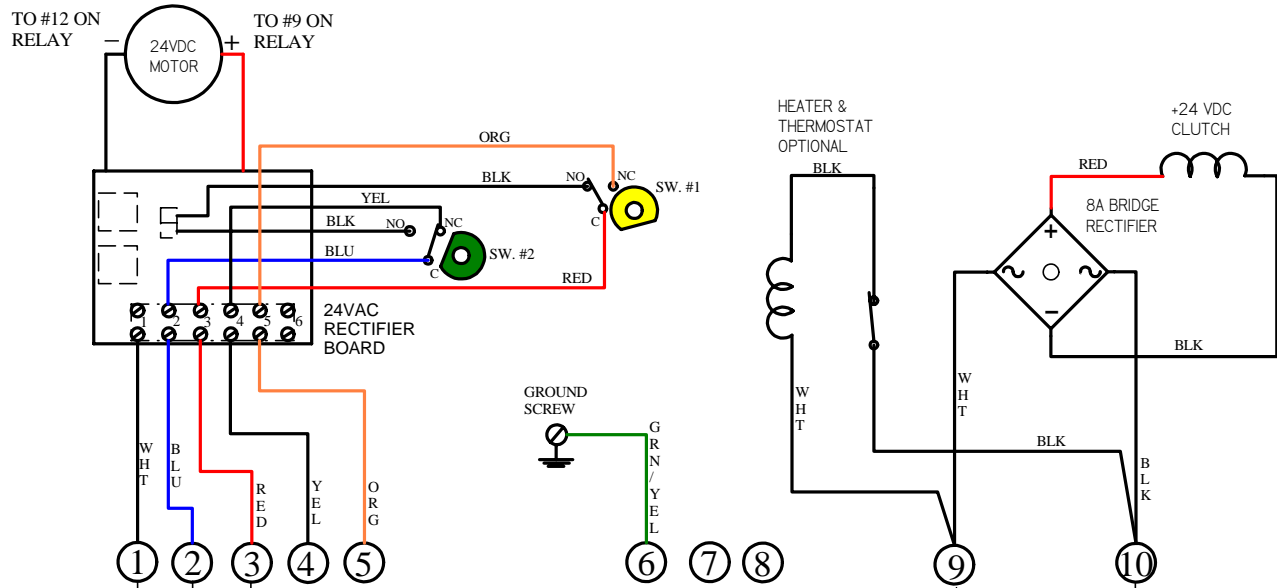


REV.	DESCRIPTION	DATE	BY
1	ADDED DC MOTOR NOTE, CLEANED UP BOARD VIEW	11APR16	WJR
2	REMOVE OPTIONAL BRAKE	20JUN23	DJB

ACTUATOR SHOWN IN OPEN POSITION



SPDT CONTROL SWITCH SHOWN FOR ILLUSTRATION ONLY

- NOTES:**
 POWER TO TERMINALS 1 & 2 TO OPEN VALVE (CCW ROTATION)
 POWER TO TERMINALS 1 & 3 TO CLOSE VALVE (CW ROTATION)
 TERMINALS 4 AND 5 LIGHT INDICATION
 TERMINALS 9 AND 10 FOR HEATER, THERMOSTAT & CLUTCH

N
HOT
24V A.C.
SUPPLY POWER

FIELD WIRING

WIRING DIAGRAM, ASC4, 24VAC SPRING RETURN WITH CLUTCH AND OPTIONAL HEATER & THERMOSTAT

I C I	Indelac Controls, Co. Florence, Ky. 41042	21APR14 WJR
	W140421	