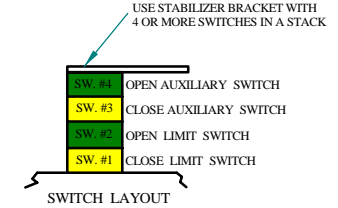
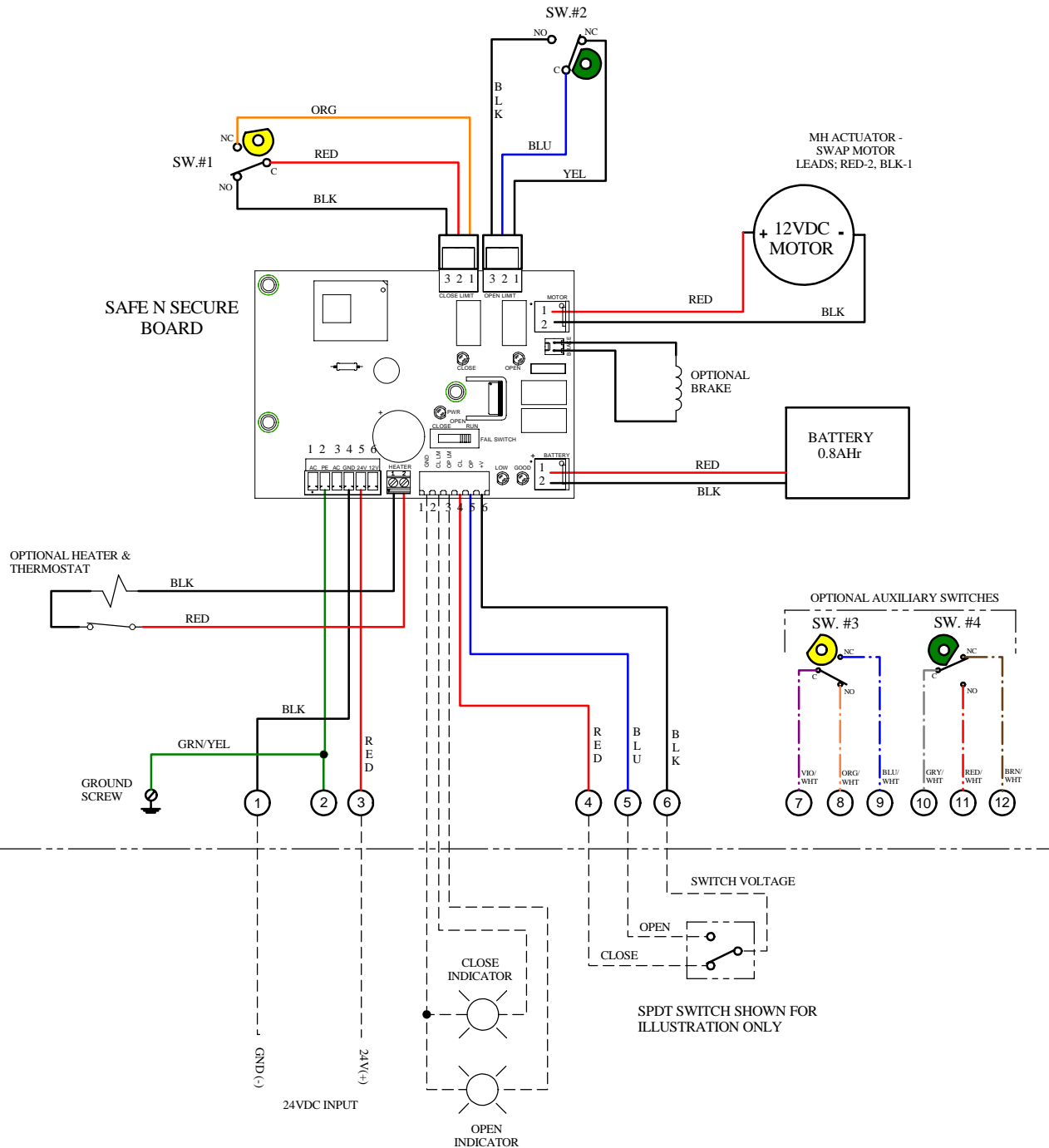


NO	REVISION	DATE	BY
1	ADDED OPTIONAL AUXILIARY SWITCHES	25SEP13	WJR
2	MODIFIED CURRENT NOTE; WAS 3.5	08OCT15	WJR
3	AUX. SWITCH WIRE COLOR CHANGES	22MAR16	WJR
4	ADDED TERMINAL STRIP FOR POWER CONN.	21FEB19	WJR
5	NEW BOARD VIEW & CABLE CONNECTIONS	06NOV23	WJR



**ACTUATOR SHOWN IN OPEN POSITION**

**NOTES:**

- CONTROL CAN OPERATE WITH 24VDC INPUT. INPUT POWER SOURCE TO BE @ 3.5A MINIMUM (INCLUDES HEATER).
- UNIT IS SHIPPED WITHOUT THE BATTERY PLUGGED IN. AFTER INSTALLING UNIT AND CONNECTING INCOMING POWER, PLUG BATTERY CONNECTOR INTO THE SAFE N SECURE BOARD, J1.
- CAMS FOR LIMIT SWITCHES ARE PRESET AT THE FACTORY. TO INCREASE OR DECREASE VALVE MOTION, THE CAMS CAN BE ADJUSTED SLIGHTLY.
- THE FAIL SWITCH NEEDS TO BE SET IN THE "RUN", "OPEN" OR "CLOSE" POSITION PRIOR TO INSTALLING THE COVER. WHEN INCOMING POWER FAILS:  
 "RUN" = ACTUATOR WILL CONTINUE TO RUN WITH USER COMMAND SIGNAL UNTIL BATTERY DIES.  
 "OPEN" = ACTUATOR WILL MOVE TO THE OPEN POSITION.  
 "CLOSE" = ACTUATOR WILL MOVE TO THE CLOSE POSITION.
- INDICATOR LAMPS NEED TO BE +12VDC ONLY. NEGATIVE OF LAMP IS CONNECTED TO PIN 1 OF J6.
- COMMAND SIGNAL USES A SINGLE POLE, DOUBLE THROW CONTACT (RELAY OR SWITCH) RATED FOR 3AMPS OR MORE. **DO NOT CONNECT EXTERNAL VOLTAGE.** WHEN THE COMMAND SIGNAL IS DELIVERED, THE OPEN OR CLOSED LED SHOULD LIGHT TO INDICATE THE MOTION OF THE ACTUATOR.
- WHEN INCOMING POWER IS PRESENT, BLUE LED WILL BE LIT AND ACTUATOR RUNS OFF OF INCOMING POWER. WHEN INCOMING POWER FAILS, BLUE LED WILL TURN OFF AND THE GREEN BATTERY LED WILL LIGHT - ACTUATOR WILL NOW RUN OFF OF BATTERY POWER UNTIL INCOMING POWER IS RESTORED.
- RED LED WILL LIGHT WHEN BATTERY VOLTAGE GETS TOO LOW.

**FIELD WIRING**

**IC<sub>I</sub>** Indelac Controls, Inc.  
 Florence, Ky. 41042

WIRING DIAGRAM, SAFE N SECURE, 24VDC, M SERIES; 0.8AHR BATTERY, OPTIONAL AUXILIARY SWITCHES, WITH HEATER & THERMOSTAT

WJR 24SEP13

**W130924**