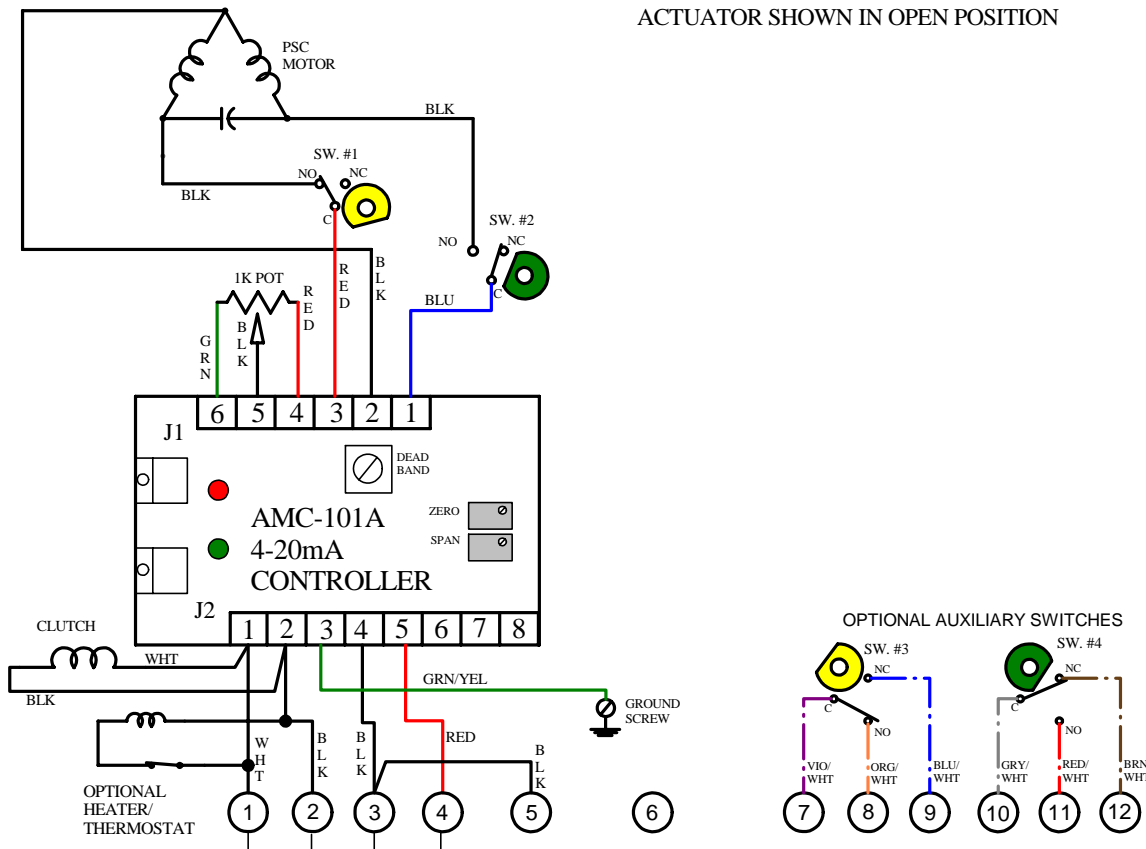
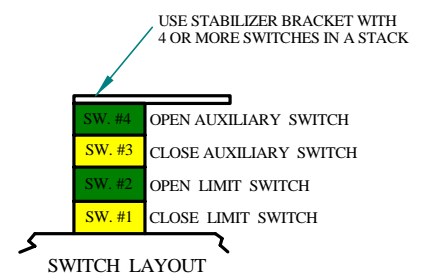
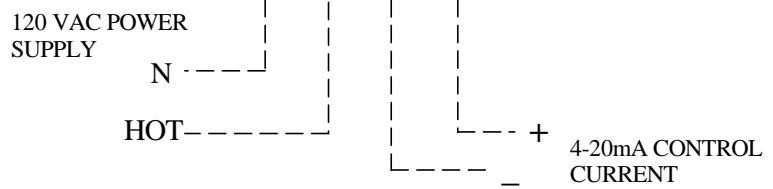


ACTUATOR SHOWN IN OPEN POSITION



## FIELD WIRING



NOTE:  
THE FEEDBACK POTENTIOMETER AND LIMIT SWITCHES HAVE BEEN SET AT THE FACTORY - THEY DO NOT REQUIRE FURTHER CALIBRATION.

TO CALIBRATE THE OPEN AND CLOSE POSITION USE THE TRIM POTS LABELED Z (ZERO) FOR CLOSE (4mA) AND S (SPAN) FOR OPEN (20mA).

115VAC POWER TO BE APPLIED ALL THE TIME - THIS POWERS AND ENGAGES THE MOTOR CLUTCH. WHEN POWER IS REMOVED, THE CLUTCH DIS-ENGAGES AND THE ACTUATOR WILL FAIL TO THE DESIRED POSITION.

ACTUATOR IS SHIPPED IN ITS NORMAL FAIL POSITION.

1	ADDED SWITCHES, BRAKE AND HEATER, CHANGED TERMINALS	26SEP16	WJR
2	MODIFIED "FAIL" POSITION NOTES	11SEP18	WJR
3	REMOVE OPTIONAL BRAKE	06JUN23	DJB

<b>I<sub>C</sub>I</b>		Indelac Controls, Inc. Florence, Ky. 41042	
WIRING DIAGRAM, ASC SERIES SPRING RETURN, 115VAC W/CLUTCH, 4-20mA POSITIONER, OPTIONAL, HEATER & 2 AUX. SWITCHES			
WJR	18SEP13	W130918	