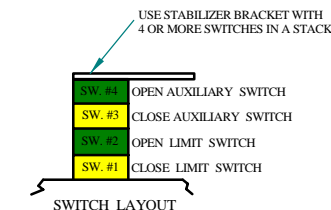
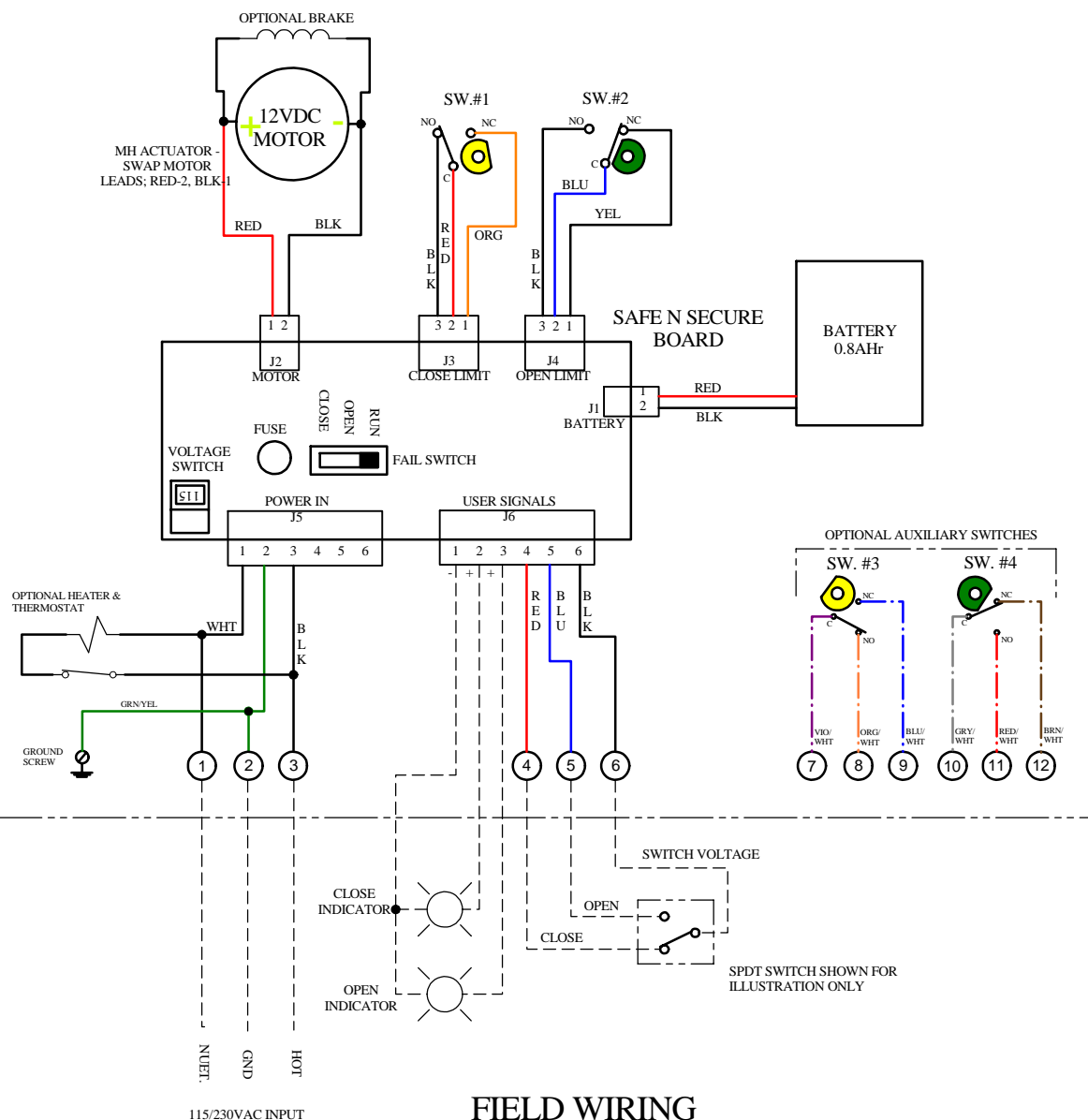


NO	REVISION	DATE	BY
1	AUX. SWITCH WIRE COLOR CHANGES	17MAR16	WJR
2	ADDED TERMINAL STRIP FOR POWER CONN.	11FEB19	WJR



ACTUATOR SHOWN IN OPEN POSITION

NOTES:

- CONTROL CAN OPERATE WITH 115 or 230 VAC INPUT. **VOLTAGE INPUT SWITCH NEEDS TO BE MOVED TO POSITION THAT MATCHES THE POWER INPUT VOLTAGE.** INPUT POWER SOURCE TO BE @ 0.5A MINIMUM.
- FUSE IS PICO STYLE, 500mA, 250VAC.
- UNIT IS SHIPPED WITHOUT THE BATTERY PLUGGED IN. AFTER INSTALLING UNIT AND CONNECTING INCOMING POWER, PLUG BATTERY CONNECTOR INTO THE SAFE N SECURE BOARD, J1.
- CAMS FOR LIMIT SWITCHES ARE PRESET AT THE FACTORY. TO INCREASE OR DECREASE VALVE MOTION, THE CAMS CAN BE ADJUSTED SLIGHTLY.
- THE FAIL SWITCH NEEDS TO BE SET IN THE "RUN", "OPEN" OR "CLOSE" POSITION PRIOR TO INSTALLING THE COVER. WHEN INCOMING POWER FAILS:
"RUN" = ACTUATOR WILL CONTINUE TO RUN WITH USER COMMAND SIGNAL UNTIL BATTERY DIES.
"OPEN" = ACTUATOR WILL MOVE TO THE OPEN POSITION.
"CLOSE" = ACTUATOR WILL MOVE TO THE CLOSE POSITION.
- INDICATOR LAMPS NEED TO BE +12VDC ONLY. NEGATIVE OF LAMP IS CONNECTED TO PIN 1 OF J6.
- COMMAND SIGNAL USES A SINGLE POLE, DOUBLE THROW CONTACT (RELAY OR SWITCH) RATED FOR 3AMPS OR MORE. DO NOT CONNECT EXTERNAL VOLTAGE.
- WHEN INCOMING POWER IS PRESENT, BLUE LED WILL BE LIT AND ACTUATOR RUNS OFF OF INCOMING POWER. WHEN INCOMING POWER FAILS, BLUE LED WILL TURN OFF AND THE GREEN BATTERY LED WILL LIGHT - ACTUATOR WILL NOW RUN OFF OF BATTERY POWER UNTIL INCOMING POWER IS RESTORED.
- RED LED WILL LIGHT WHEN BATTERY VOLTAGE GETS TOO LOW.