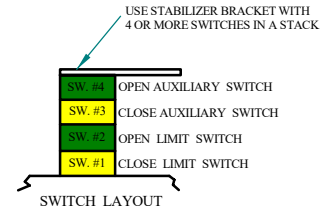
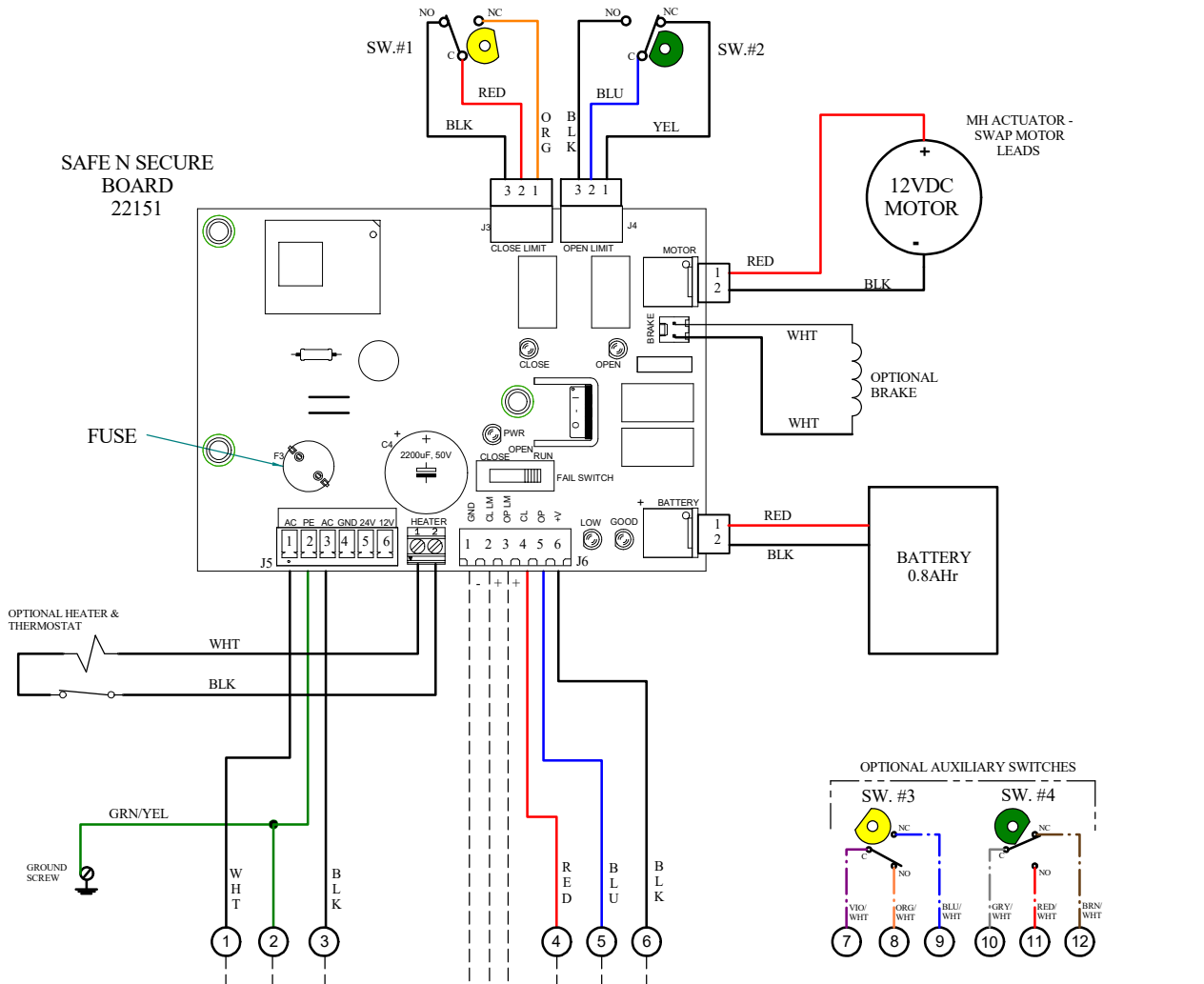


NO.	REVISION	DATE	BY
1	ADDED OPTIONAL AUX SW.	02OCT14	WJR
2	CHANGED AUX. WIRE COLORS	02AUG16	WJR
3	ADDED WIRING TERMINAL BLOCK TO DRAWING	29MAR24	WJR



ACTUATOR SHOWN IN OPEN POSITION

NOTES:

- INPUT POWER TO BE 24VAC @ 3A MINIMUM.
- FUSE IS PICO STYLE, 3.15A, 250VAC.
- UNIT IS SHIPPED WITHOUT THE BATTERY PLUGGED IN. AFTER INSTALLING UNIT AND CONNECTING INCOMING POWER, PLUG BATTERY CONNECTOR INTO THE SAFE N SECURE BOARD, J1.
- CAMS FOR LIMIT SWITCHES ARE PRESET AT THE FACTORY. TO INCREASE OR DECREASE VALVE MOTION, THE CAMS CAN BE ADJUSTED SLIGHTLY.
- THE FAIL SWITCH NEEDS TO BE SET IN THE "RUN", "OPEN" OR "CLOSE" POSITION PRIOR TO INSTALLING THE COVER. WHEN INCOMING POWER FAILS:
 "RUN" = ACTUATOR WILL CONTINUE TO RUN WITH USER COMMAND SIGNAL UNTIL BATTERY DIES.
 "OPEN" = ACTUATOR WILL MOVE TO THE OPEN POSITION.
 "CLOSE" = ACTUATOR WILL MOVE TO THE CLOSE POSITION.
- INDICATOR LAMPS NEED TO BE +12VDC ONLY.
- COMMAND SIGNAL USES A SINGLE POLE, DOUBLE THROW CONTACT (RELAY OR SWITCH) RATED FOR 3AMPS OR MORE. NO EXTERNAL VOLTAGE IS TO BE APPLIED TO THE SIGNAL INPUT PINS.
- WHEN INCOMING POWER IS PRESENT, BLUE LED WILL BE LIT AND ACTUATOR RUNS OFF OF INCOMING POWER. WHEN INCOMING POWER FAILS, BLUE LED WILL TURN OFF AND THE GREEN BATTERY LED WILL LIGHT - ACTUATOR WILL NOW RUN OFF OF BATTERY POWER UNTIL INCOMING POWER IS RESTORED.
- RED LED WILL LIGHT WHEN BATTERY VOLTAGE GETS TOO LOW.

