



2020 CATALOG

Control Stations

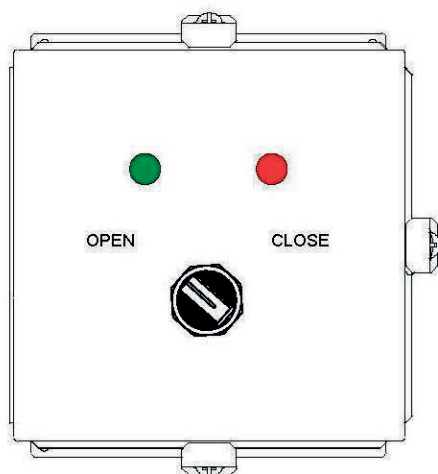
Rev. 1-01/20

INDELAC
CONTROLS, INC.

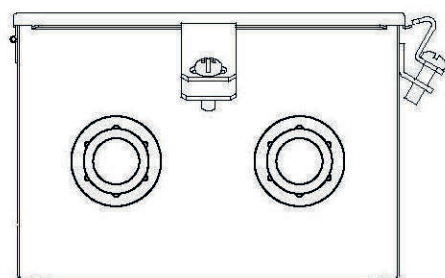
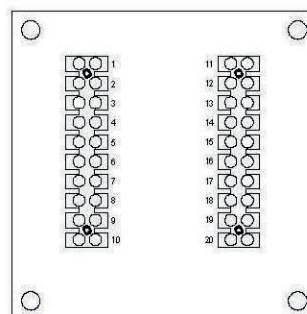
OCSL SERIES

INDUSTRIAL CONTROL STATION

For On/Off Unit



Shown with CS4X Enclosure Option



ENCLOSURE OPTIONS

Model	NEMA Rating	Material	Length	Width	Depth	Weight	Mounting
OCSL-*-CS4X	4, 4X, 12, 13	Carbon Steel	6 in (15.24 cm)	6 in (15.24 cm)	4 in (10.16 cm)	30 lbs	Wall Mount and Hardware Included; Custom Mounting Also Available
OCSL-*-SS4X	4, 4X	Stainless Steel	6 in (15.24 cm)	6 in (15.24 cm)	4 in (10.16 cm)	33 lbs	Wall Mount and Hardware Included; Custom Mounting Also Available
OCSL-*-AL7	4, 4X, 7, 9	Cast Aluminum	12 in (30.48 cm)	12 in (30.48 cm)	6 in (15.24 cm)	79 lbs	Mounting Feet Included Only; Custom Mounting Also Available

*When building a part number, insert motor voltage code in place of **

❖ Fiberglass and Polycarbonate enclosures available upon request

OCSL SERIES

INDUSTRIAL CONTROL STATION

SPECIFICATIONS

INPUT OPTIONS: (CHOOSE ONE)

120vac, +/-10% - normal, 10A max current

230vac, +/-10% - normal, 10A max current

12vdc

24vdc

SELECTOR SWITCH:

Open/Off/Close: 3-position switch for position selection

PANEL LIGHTS FOR POSITION INDICATION:

Red: Close position

Green: Open position

❖ May require auxiliary switches in the actuator

MODEL NUMBER BREAKDOWN

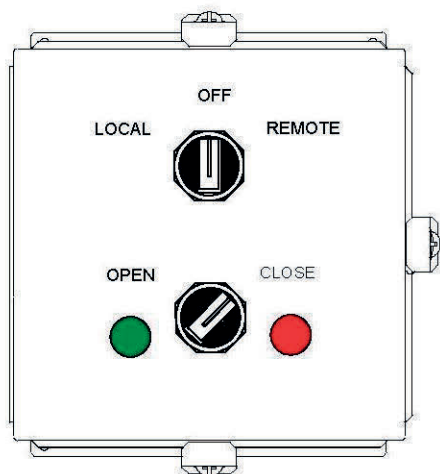
Series	Operation	Voltage	Enclosure	Options
OC	SL	- ____	- ____	- ____
Open/Off/Close switch	Open/Off/Close selector switch	B: 115vac C: 230vac D: 12vdc E: 24vdc	CS4X SS4X AL7	A: Amber Power on light K: Mounting kit to mount to actuator ES: Emergency stop button ¹ DS: Disconnect switch ¹ H: Heater

¹ Requires 10 X 8 X 6 enclosure, not available for AL7

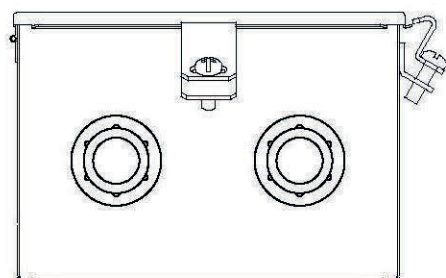
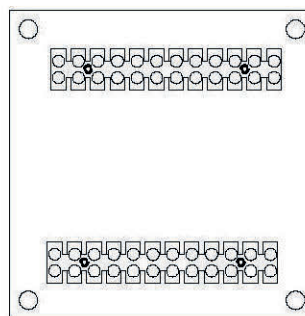
RLSL SERIES

INDUSTRIAL CONTROL STATION

For On/Off Unit



Shown with CS4X Enclosure Option



ENCLOSURE OPTIONS

Model	NEMA Rating	Material	Length	Width	Depth	Weight	Mounting
RLSL-*-CS4X	4, 4X, 12, 13	Carbon Steel	6 in (15.24 cm)	6 in (15.24 cm)	4 in (10.16 cm)	30 lbs	Wall Mount and Hardware Included; Custom Mounting Also Available
RLSL-*-SS4X	4, 4X	Stainless Steel	6 in (15.24 cm)	6 in (15.24 cm)	4 in (10.16 cm)	33 lbs	Wall Mount and Hardware Included; Custom Mounting Also Available
RLSL-*-AL7	4, 4X, 7, 9	Cast Aluminum	12 in (30.48 cm)	12 in (30.48 cm)	6 in (15.24 cm)	79 lbs	Mounting Feet Included Only; Custom Mounting Also Available

*When building a part number, insert motor voltage code in place of **

❖ Fiberglass and Polycarbonate enclosures available upon request

RLSL SERIES

INDUSTRIAL CONTROL STATION

SPECIFICATIONS

INPUT OPTIONS: (CHOOSE ONE)

120vac, +/-10% - normal, 10A max current

230vac, +/-10% - normal, 10A max current

12vdc

24vdc

SELECTOR SWITCHES:

Remote/Off/Local: 3-position switch for selecting mode of operation

Open/Close: 2-position switch for actuator position selection

PANEL LIGHTS FOR POSITION INDICATION:

Red: Close position

Green: Open position

❖ May require auxiliary switches in the actuator

MODEL NUMBER BREAKDOWN

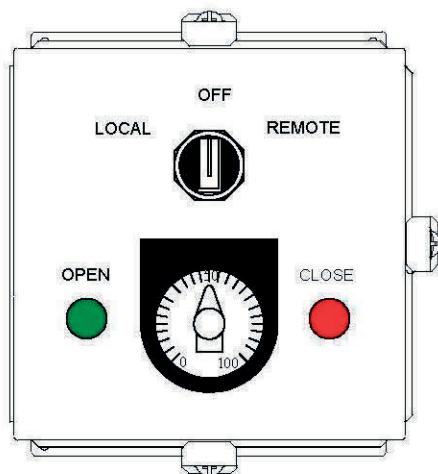
Series	Operation	Voltage	Enclosure	Options
RL	SL	- __	- __	- __
Remote/Off/Local switch	Open/Close selector switch	B: 115vac C: 230vac D: 12vdc E: 24vdc	CS4X SS4X AL7	A: Amber Power on light K: Mounting kit to mount to actuator ES: Emergency stop button ¹ DS: Disconnect switch ¹ H: Heater

¹ Requires 10 X 8 X 6 enclosure, not available for AL7

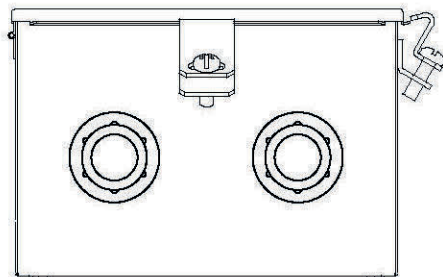
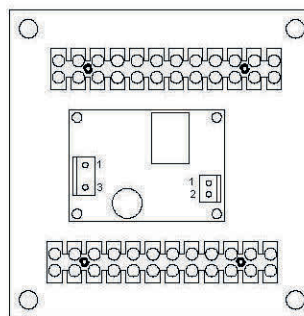
RLV SERIES

INDUSTRIAL CONTROL STATION

For Modulating Unit



Shown with CS4X Enclosure Option



ENCLOSURE OPTIONS

Model	NEMA Rating	Material	Length	Width	Depth	Weight	Mounting
RLV-*-CS4X	4, 4X, 12, 13	Carbon Steel	6 in (15.24 cm)	6 in (15.24 cm)	4 in (10.16 cm)	30 lbs	Wall Mount and Hardware Included; Custom Mounting Also Available
RLV-*-SS4X	4, 4X	Stainless Steel	6 in (15.24 cm)	6 in (15.24 cm)	4 in (10.16 cm)	33 lbs	Wall Mount and Hardware Included; Custom Mounting Also Available
RLV-*-AL7	4, 4X, 7, 9	Cast Aluminum	12 in (30.48 cm)	12 in (30.48 cm)	6 in (15.24 cm)	79 lbs	Mounting Feet Included Only; Custom Mounting Also Available

*When building a part number, insert motor voltage code in place of **

❖ Fiberglass and Polycarbonate enclosures available upon request

RLV SERIES

INDUSTRIAL CONTROL STATION

SPECIFICATIONS

INPUT OPTIONS: (CHOOSE ONE)

120vac, +/-10% - normal, 10A max current

230vac, +/-10% - normal, 10A max current

12vdc

24vdc

SWITCHES:

Remote/Off/Local: 3-position switch for selecting mode of operation

4-20mA Transmitter: Dial knob, analog signal generator for proportional control

PANEL LIGHTS FOR POSITION INDICATION:

Red: Close position

Green: Open position

❖ Requires auxiliary switches in the actuator

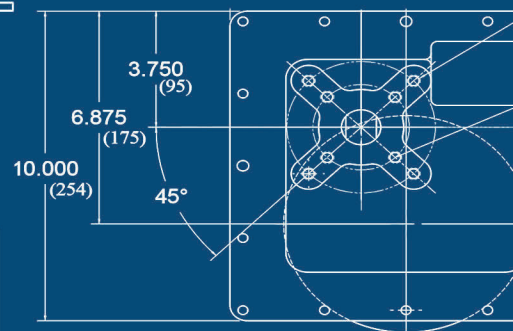
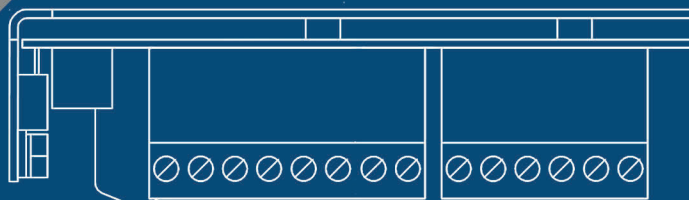
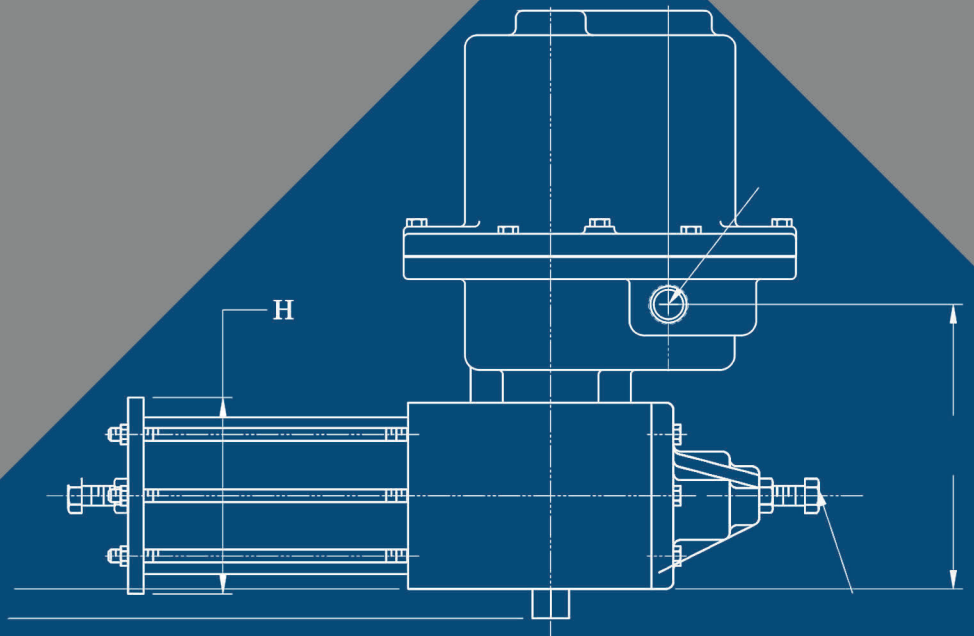
MODEL NUMBER BREAKDOWN

Series	Operation	Voltage	Enclosure	Options
RL	V	- __	- __	- __
Remote/Off/Local switch	4-20mA transmitter dial knob	B: 115vac C: 230vac D: 12vdc E: 24vdc	CS4X SS4X AL7	A: Amber Power on light K: Mounting kit to mount to actuator ES: Emergency stop button ¹ DS: Disconnect switch ¹ H: Heater

¹ Requires 10 X 8 X 6 enclosure, not available for AL7

INDELAC

CONTROLS, INC.



CONTACT US

 859-727-7890

 800-662-9424

 859-727-4070

 WWW.INDELAC.COM

 SALES@INDELAC.COM