
MANUAL OVERRIDE OPERATION

S-SERIES WITH DOME STYLE POSITION INDICATOR

DO NOT USE FOR S-SERIES ACTUATORS WITH THE FOLLOWING OPTIONS:

- 12/24VDC OR 24VAC VOLTAGE MOTORS
- 115VAC VOLTAGE OPTION WITH 75% DUTY CYCLE MOTORS
- ACTUATORS CONTAINING A MOTOR BRAKE

DISCONNECT ELECTRICAL POWER BEFORE MANUALLY OVERRIDING THIS PRODUCT

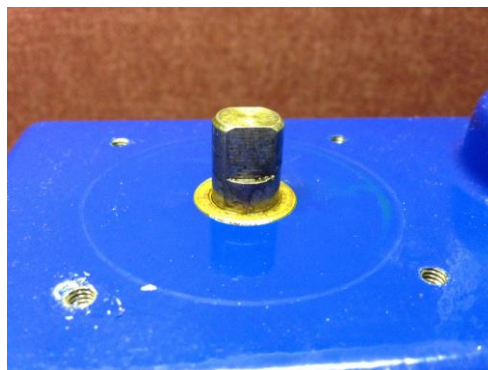
CAUTION: MANUALLY OVERRIDING ELECTRIC ACTUATORS WITH MECHANICAL STOPS ON THE ACTUATOR, VALVE, DAMPER, LOUVER, OR OTHER DEVICE CAN RESULT IN DAMAGE THE INTERNAL COMPONENTS OF THE ACTUATOR.

CAUTION: MANUALLY OVERRIDING ELECTRIC ACTUATORS THAT ARE LOCKED UP DUE TO DAMAGED MECHANICAL COMPONENTS, CORROSION, INFREQUENT USE, DEBRIS CAUGHT IN THE VALVE, DAMPER, LOUVER, OR OTHER DEVICE CAN RESULT IN DAMAGE THE INTERNAL COMPONENTS OF THE ACTUATOR.

STEP 1: Remove the four screws securing the dome to the cover of the actuator.



STEP 2: Remove the dome cover, dome cover O-ring, and position indicator. The actuator shaft will be visible at this point as shown in the picture below.



INDELAC

CONTROLS, INC.

STEP 3: Using a 3/8" wrench aligned with the flats of the shaft to rotate the shaft in either CLOCKWISE or COUNTERCLOCKWISE.

CAUTION: Rotating the shaft more than 90 degrees during manual operation will cause the cams to rotate past the open/closed limits, causing improper operation.



STEP 4: If the actuator is in the OPEN position rotate the shaft CLOCKWISE to the CLOSE position

STEP 5: If the actuator is in the CLOSE position rotate the shaft COUNTERCLOCKWISE to the OPEN position

NOTICE: When manually operating the actuator, you are rotating the actuator gear train so there is some resistance to turning, but that is normal.